



## IN THIS ISSUE

- 1 2023-2024 SEEDLING TREE PROGRAM
- 1 HUME DRAW ASSESSMENT UPDATE
- 2 ACME UPDATE & FUND DRIVE
- 3 WORKING LANDS WORKSHOP THANK YOU
- 3 NATIONAL WATER QUALITY INITIATIVE
- 3 NEW AT LARGE BOARD SUPERVISOR
- 4 WORKING LANDS AND WILDLIFE EVENT
- 4 COST-SHARE PROGRAMS

## CALENDAR

- NOV 01 **Begin 2023-2024 Tree Program**
- NOV 07 **Monthly Board Meeting**
- NOV 10 **Veteran's Day Office Closed**
- NOV 15-17 **WACD Annual Convention**
- NOV 23 **Thanksgiving Day Office Closed**
- DEC 05 **Monthly Board Meeting**
- DEC 25 **Christmas Day Office Closed**
- JAN 01 **New Year's Day Office Closed**
- JAN 02 **Monthly Board Meeting**
- JAN 15 **Martin Luther King Day Office Closed**
- FEB 06 **Monthly Board Meeting**



## 2023-2024 SEEDLING TREE PROGRAM

The SCCD offers conservation grade seedling trees at a nominal price for conservation purposes such as living snow fences, windbreaks, visual screens, noise barriers, erosion control, and wildlife habitat.

This year the District will be working with Lincoln Oakes Nursery out of Bismarck, ND; Colorado State Forest Service Nursery out of Fort Collins, CO; and OneCanopy out of Loveland, CO. There will be a variety of deciduous and coniferous seedlings available in varying sizes, including:

- Bare Root (6+ inches)
- D16 (2" dia x 7" deep)
- D10 (1.5" dia x 8.25" deep)
- D40 (2.5" dia x 10" deep)

The SCCD will continue to offer a perennial pollinator package in partnership with Piney Island Native Plants. As with the conventional tree program, these are intended to be used as a conservation planting for pollinator habitat. The packages will include:

- Blanket Flower
- Rocky Mountain Penstemon
- Smooth Aster
- Western Yarrow
- Wild Bergamot (Beebalm)



*Piney Island Native Plants is a greenhouse and nursery producing locally-sourced, locally-adapted, containerized native plants for restoration, reclamation, and conservation-focused projects.*

Perennials come in 10 cubic inch "cone-tainers" and are sold in lots of 35 (full order - 7 plugs of each species) or lots of 15 (half order - 3 plugs of each species). Perennials are generally ready for pickup from the PINP greenhouse in late May or early June.

**Order now at [www.sccdwy.org/tree-program](http://www.sccdwy.org/tree-program)**

## HUME DRAW ASSESSMENT UPDATE

The Hume Draw Assessment, which is being completed through a partnership between the City of Sheridan and the SCCD, is underway. Over the spring and summer, consultants compiled and evaluated existing information, including water rights documentation, and performed field surveys. Field surveys included collecting information about the infrastructure (dams, spillways, inlets, and outlets), pond depths and capacities, and observations about the vegetation, water quality, and other information. The next phase is to develop a plan that outlines the concerns and proposes recommendations for Hume Draw and the associated ponds and wetlands. This plan will serve as a basis for future discussions regarding specific improvements.

**There will be an update meeting on November 28 at 6:00 pm at the Best Western to discuss the findings and proposed recommendations.**

*Funding for the project is through the US Environmental Protection Agency under Section 205j of the Clean Water Act administered by the Wyoming Department of Environmental Quality.*

# INVEST IN SHERIDAN'S NATURAL RESOURCES

SCCD is one of the 34 conservation districts in Wyoming. Each district has a unique program tailored to meet the specific natural resource needs of its district.

The SCCD is funded primarily through federal and state grants with some support from local funding sources, including contributions from private citizens.

**As a political subdivision of state government that uses donations solely for public purposes, your investment in the SCCD is considered a tax-deductible charitable contribution.**

Individual or business name

Mailing address

City, state, zip

Email address

Phone number

## CONTRIBUTION AMOUNT

- \$50     \$100
- \$150     \$500
- Other \$ \_\_\_\_\_

## CONTRIBUTION PREFERENCE

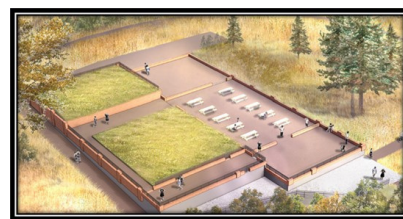
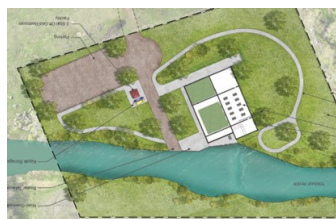
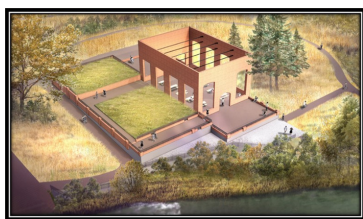
- Acme Power Plant Reclamation Project
- Watershed Programs & Monitoring
- Oil Recycling & Tree Program
- Invasive Grasses & Range Monitoring
- Information & Outreach
- Anywhere Needed

Please make checks payable to SCCD or donate online at [www.sccdwy.org](http://www.sccdwy.org)

# ACME POWER PLANT RECLAMATION PROJECT UPDATE & FUND DRIVE

Cleanup activities at the Former Acme Power Plant are currently underway with partial funding through federal and state programs with some support from local sources.

**Site Reuse Planning** Building reuse options have been considered since the District assumed ownership of the property in 2017. With funding from USEPA, the Acme Working Group worked with a team of planning professionals to complete a market study and site plans, with a specific emphasis on the building. During those discussions, it became apparent that while no feasible use for a fully intact building was identified, there was certainly interest in preserving its history and importance to the community and surrounding area. Ideas presented included maintaining the building footprint and some building components. Once asbestos and other contaminants are removed from the building, there will be opportunities to salvage brick and other materials.



**Cleanup Activities** In the coming weeks, the District will be starting the process of hiring contractors to perform debris and asbestos removal, which will be followed by addressing contamination in soils. Removing the debris is important to improve safety and to access the other areas for cleanup. We had an inventory completed in 2021, which showed large quantities of wood debris, metal for possible salvage, 6 structures (including trailer houses and a barn); nearly 900 tires, and an assortment of appliances, recreational boats, campers and truck toppers, and furniture. The timeframe for completion of other cleanup, building deconstruction, and site redevelopment will depend on funding availability.

**Fundraising Campaign** While a significant amount of the costs for this phase of cleanup will be covered through grants, some of the grant funds do require non-federal match. While the District has received commitments for some of it, additional funding is still needed. The District, with support from the Acme Working Group, is launching a formal fundraising campaign to assist with site cleanup. Funds raised through the campaign will ONLY be used for cleanup efforts at the site. Because it isn't possible to have volunteer cleanup days at the site, the fundraising campaign allows community members a chance to support and be part of this project.

## How You Can Help

- **MAKE A CONTRIBUTION to show support and match grant funds.**

*Contributions to a government entity ARE tax deductible.*

Online contributions are easy through the project website! Or send a check to our office with "Acme" in the memo line or by using the form to the left.



- **SHARE STORIES and ideas on the project website.**
- **PROVIDE INPUT and feedback at update meetings and events.**

[www.acmeprojectwyoming.org](http://www.acmeprojectwyoming.org)



# WORKING LANDS WORKSHOP

## SPONSORS & ORGANIZERS

We would like to extend a heartfelt thank you to the businesses, organizations, agencies, ranches, and individuals who helped organize or sponsored this year's Working Lands Workshop with Nicole Masters. Events like this would not be possible without you.

# THANK YOU!

## SPONSORS

- Sheridan County Farm Bureau Federation
- Padlock Ranch
- Dan & Jeanne Scott Foundation
- The Nature Conservancy
- Agoro Carbon Alliance
- World Wildlife Fund
- Mullinax Irrigation
- Sheridan County Weed & Pest
- Millborn Seeds
- Farmers Co-Op
- Ranch Right LLC
- Powder River Basin Resource Council

## OTHER SUPPORT

- Sheridan Stationery
- Sheridan College
- USDA-NRCS
- Rock Springs Land & Cattle
- Barnyards & Backyards
- UW SARE

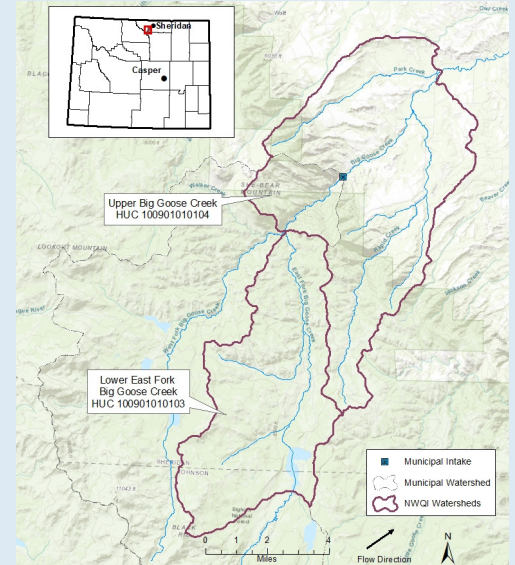
## PLANNING COMMITTEE

- Sheridan Community Land Trust
- Sheridan County Conservation District
- USDA-NRCS
- UW Sheridan Research & Extension Center
- Powder River Basin Resource Council
- UW Extension
- White Ranch
- Broken Arrow Ranch
- Faith Cattle Company
- Rock Springs Land & Cattle

Planning is underway for the 2024 Working Lands Workshop. If you're interested in sponsoring, please reach out to our office!

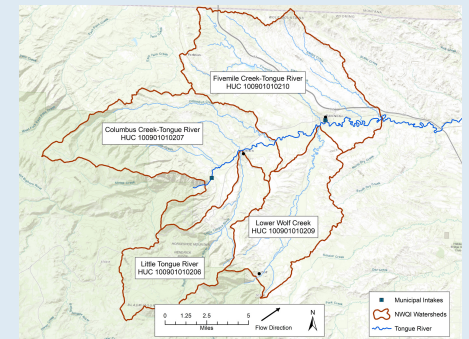
# NATIONAL WATER QUALITY INITIATIVE

The USDA National Water Quality Initiative (NWQI) provides targeted funding for assistance in small watersheds for implementation of conservation practices. After being selected as a priority watershed, the first step of the process is to develop a "Readiness Phase" Report, which describes and characterizes the area and includes identification of critical areas and USDA eligible practices. With multiple partners, the District submitted a Readiness Phase Report for the Upper Goose Creek watershed (above Beckton and around the municipal intake), which was approved for funding allocations



beginning in FY2024. As part of that project, the USDA has earmarked \$1.2 million in USDA funds for projects within the Upper Big Goose Creek, Rapid Creek, and Park Creek drainages over the next four years. Approximately \$70,000 is available in FY2024 for eligible practices, including invasive grass treatments, irrigation improvements, fencing, and stockwater. Project applications within the NWQI watersheds do not have to compete with other areas for funding.

Earlier this year, four subwatersheds in and around the Towns of Dayton and Rancheater were selected for participation. These subwatersheds include the Fivemile Creek, Columbus Creek, Little Tongue River, and Lower Wolf Creek drainages. The District has been working on the initial report and intends to be able to begin allocating funding for those areas in FY2025.



## OTHER USDA FUNDING OPPORTUNITIES

In addition to the NWQI focus areas, significant funding opportunities exist with other USDA funding pools. The sign-up deadline for FY2024 has not been set yet, but is expected to be in November or December. If you have been thinking about a project, please contact the office as soon as you can to begin some of the pre-application activities.

## WELCOME TO OUR NEW BOARD SUPERVISOR!



Jessica Western is Principal of Big Goose Creek Resolutions and Adjunct Professor/Research Associate with the University of Wyoming. Dr. Western is a forest ecologist and social psychologist specialized in natural resource issues. She has taught natural resource policy at the University of Wyoming and Colorado State University. She has led natural resource consensus building processes in Montana, Wyoming, and Colorado for thirty years. Currently you can also find her trying to build consensus with a racehorse that it's better to be a riding horse.

Jessica was appointed to fill the at-large position that became vacant when Annie moved in August. Jessica's appointment is pending approval from the Wyoming Board of Agriculture.



1949 Sugarland Drive, Suite 102  
Sheridan, WY 82801  
(307) 672-5820 ext. 3  
www.sccdwy.org

Non-Profit Org.  
U.S. Postage Paid  
Sheridan, WY  
Permit No. 21



The mission of the Sheridan County Conservation District is to protect Sheridan County's water and land quality through assistance programs, information and outreach, monitoring, and planning.

**SCCD's regular board meetings are held the first Tuesday of each month at 4 pm.**

**BOARD OF SUPERVISORS**

- Emerson Scott  
Chair
- Edith Heyward  
Vice-Chair
- Orrin Connell  
Secretary-Treasurer
- Stephanie Masters  
Supervisor
- Jessica Western  
Supervisor

**DISTRICT STAFF**

- Carrie Rogaczewski  
District Manager
- Jackie Turner  
Program Specialist

**NRCS STAFF**

- Andrew Cassidy  
District Conservationist
- Oakley Ingersoll  
Soil Conservationist
- Chelsea Winslow  
Soil Conservation Technician



**SAVE THE DATE**  
**WORKING LANDS & WILDLIFE**

With support from SCCD, the Western Landowner Alliance will be hosting a public event to highlight the importance of working lands for wildlife habitat and open spaces. The event will be during the early evening of January 18. More specific information will follow.

**COST-SHARE ASSISTANCE AVAILABLE FOR SEPTIC SYSTEMS & FENCING/STOCKWATER PROJECTS**

The District is accepting requests for spring or summer 2024 water quality improvement projects. Funding is available for projects that address potential bacteria contributions to waterbodies within the Tongue River, Goose Creek, and Prairie Dog Creek watersheds. Potential projects include fencing and water development, relocation of corrals or facilities, and replacement of eligible septic systems. **The application deadline is February 1st.** Though this is a ways off, the earlier you start the process, the better chance your project has of being funded.



Applications received by the deadline will be considered by the Board of Supervisors at the March meeting. Among other things, projects are ranked based on their potential water quality benefit and readiness.

For more information, visit [sccdwy.org/cost-share-programs](http://sccdwy.org/cost-share-programs) or contact our office at 307-672-5820 ext. 3.