

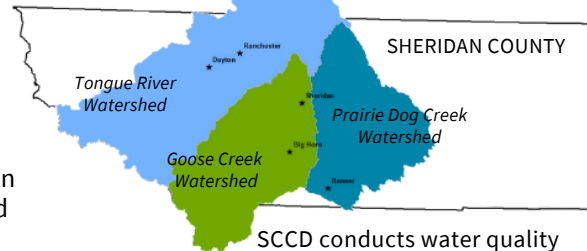
# 2021 ANNUAL COMBINED WATERSHED NEWSLETTER

Tongue River, Prairie Dog Creek, and Goose Creek Watersheds



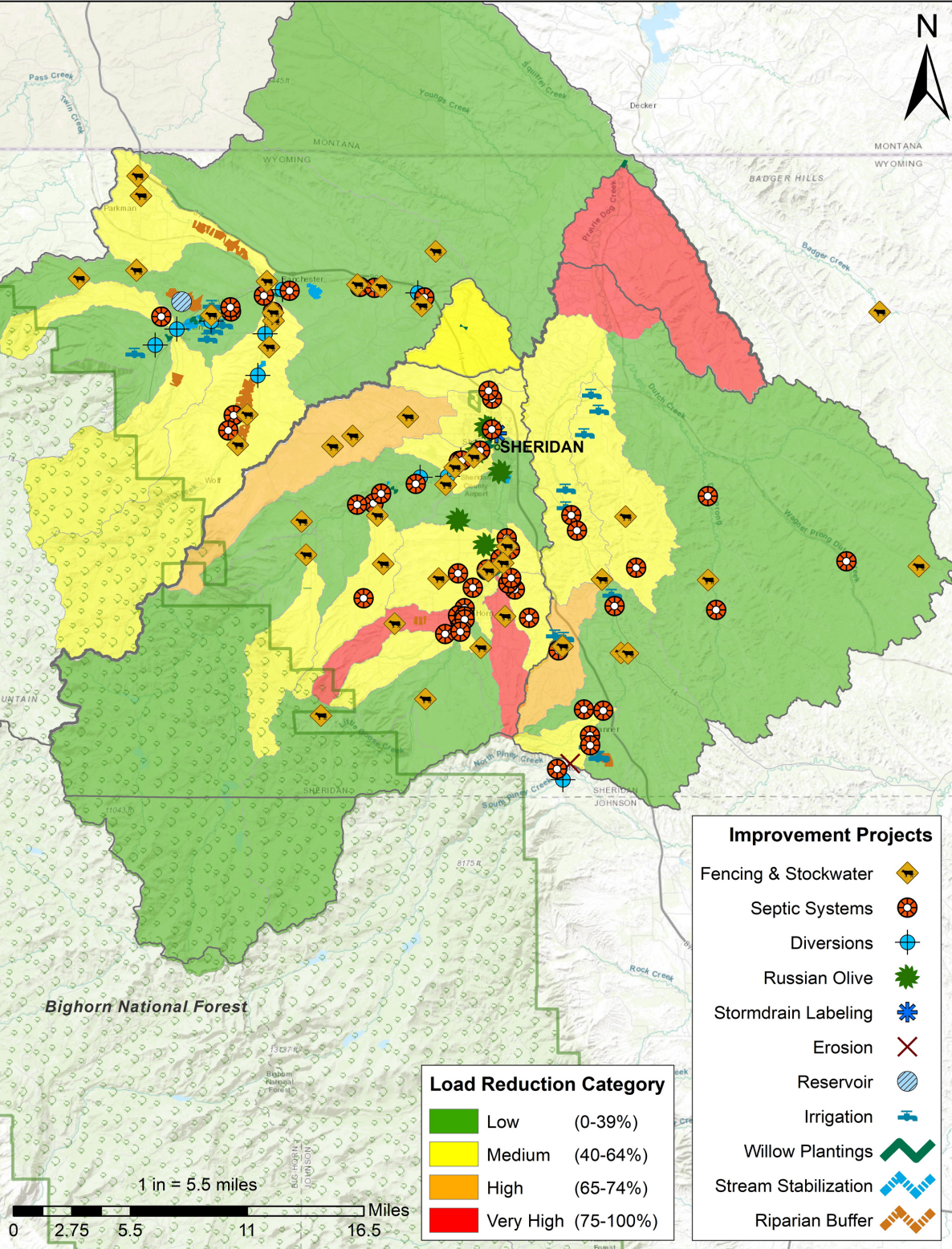
## WHEN IS MY ANNUAL WATERSHED MEETING?

The Sheridan County Conservation District (SCCD) holds a meeting every winter in each of the three watersheds to provide updates and gather input on water quality monitoring, improvement projects, and other activities within the watershed. Due to COVID concerns, the SCCD has decided to provide this information via a combined watershed newsletter in lieu of a meeting. If you're looking for more detailed information on your watershed, visit our website for past meeting minutes and handouts, watershed reports, and watershed based plans, or call or email us at the office with any questions. [www.sccdwy.org](http://www.sccdwy.org) | (307) 672-5820 ext. 3 | [jackie.turner@sccdwy.org](mailto:jackie.turner@sccdwy.org)



SCCD conducts water quality monitoring on the Tongue River, Goose Creek, and Prairie Dog Creek watersheds on a three-year rotation. This interim monitoring is part of a local watershed planning effort and is meant to evaluate long-term changes in water quality associated with installation of improvement practices and increased awareness of water quality concerns.

## COMBINED WATERSHED IMPROVEMENT PROJECTS AND LOAD REDUCTION CATEGORY MAP



## LOAD REDUCTION CATEGORIES

Load reduction requirements are calculated based on bacteria data collected from the most recent sampling year within that particular watershed. These categories tell us how much average bacteria concentrations would need to be decreased within each subwatershed to meet the Wyoming water quality standard for *E. coli*.

This map shows load reductions from the most recent sampling year in each watershed (Goose Creek 2018, Tongue River 2019, and Prairie Dog Creek 2020). Due to accessibility, load reductions in the Dutch Creek and Meade Creek subwatersheds are from 2014 and 2017 sampling, respectively. Most subwatersheds fall within the low to medium reduction category, while a few require high to very high reductions.

This data is used to observe changes in bacteria concentrations over time within a subwatershed and also helps the SCCD prioritize funding for cost-share improvement projects.

## IMPROVEMENT PROJECTS

Through federal and state grants, SCCD offers financial assistance for projects that benefit water quality in impaired watersheds. Typical projects include installing fencing or stockwater systems to minimize livestock access to waterbodies, relocating corrals or animal feeding areas away from waterbodies, and replacing eligible septic systems to eliminate sewage discharges.

IF YOU HAVE A PROJECT IN MIND, GET IN TOUCH AND WE CAN PROVIDE YOU WITH INFORMATION ON THE APPLICATION PROCESS AND DETERMINE YOUR ELIGIBILITY!





Sheridan County Conservation District  
1949 Sugarland Drive, Suite 102  
Sheridan, WY 82801  
(307) 672-5820 ext. 3  
[www.sccdwy.org](http://www.sccdwy.org)

Non-Profit Org.  
U.S. Postage Paid  
Sheridan, WY  
Permit No. 21

*The mission of the Sheridan County Conservation District is to protect Sheridan County's land and water quality through assistance programs, information and outreach, monitoring, and planning.*

## WHAT'S UP IN MY WATERSHED?



**GOOSE CREEK WATERSHED**

### WATER QUALITY SAMPLING

- Will be sampled beginning this May through October 2021
- Tentative sites for 2021 sampling include two on Goose Creek, four on Big Goose Creek, four on Little Goose Creek, and one each on the following tributaries: Soldier, Beaver, Park, Rapid, McCormick, Kruse, Jackson, and Sackett Creeks

### IN-PROGRESS PROJECTS

- Bank stabilization on Big Goose Creek in the Middle Big Goose Creek subwatershed
- Seepage mitigation on Gerdel Ditch in the Middle Little Goose Creek subwatershed

### RECENTLY COMPLETED PROJECTS

- One septic system replacement on Alder Gulch in the Beaver Creek subwatershed and one septic abandonment on Big Goose Creek in the Lower Big Goose Creek subwatershed
- Pipeline installation to address seepage issues on East Side Ditch in the Middle Little Goose Creek subwatershed
- Bank stabilization on Big Goose Creek in the Middle Big Goose Creek subwatershed



**PRAIRIE DOG CREEK WATERSHED**

### WATER QUALITY SAMPLING

- Monitoring was completed at five sites on Prairie Dog Creek and two tributary sites (Wildcat Creek and Jenks Creek) ten times from May-October 2020
- Temperature loggers reported temperatures in exceedance of the 20°C standard at 3 out of 4 mainstem sites
- Conductivity and turbidity were within the expected ranges and pH was within the standard at all sites
- Bacteria geometric mean concentrations exceeded the standard at all sites during both the early and late season, apart from Jenks Creek during the early season
- The 2020 *Prairie Dog Creek Watershed Interim Monitoring Project Report* will be available on our website once finalized

### IN-PROGRESS PROJECTS

- Fencing/ stockwater project in the Lower Middle Prairie Dog Creek subwatershed

### RECENTLY COMPLETED PROJECTS

- Septic system replacement on Piney-Cruse Ditch in the North Piney Creek subwatershed



**TONGUE RIVER WATERSHED**

### WATER QUALITY SAMPLING

- Last monitored from May to October 2019
- The 2019 *Tongue River Watershed Interim Monitoring Project Final Report* was approved by the Wyoming Department of Environmental Quality (WDEQ) in October and is available on our website at [sccdwy.org/tongue-river-watershed](http://sccdwy.org/tongue-river-watershed)
- Sampling in the Tongue River watershed will be conducted again in 2022

### IN-PROGRESS PROJECTS

- Diversion stabilization and repair and reinforcement of a dike and bridge in the Little Tongue River subwatershed

### RECENTLY COMPLETED PROJECTS

- Bank stabilization on Wolf Creek and segments of York Ditch were rebuilt in the Wolf Creek subwatershed
- Bank stabilization on portions of the Tongue River in the Lower Tongue River subwatershed
- Septic system replacement on Tongue River in the Lower Tongue River subwatershed